

# AIRPOWER® XR22

Art. No. 607633



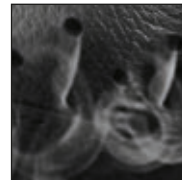
## CE EN ISO 20345:2011 S3 HRO HI CI WR SRC

Leather thickness 2.0 – 2.2 mm, breathable and waterproof with GORE-TEX® Performance, leg height 18 cm, antistatic, sole 012

Available sizes UK 4 – 12, extra sizes UK 13 / 14



607633



HAIX® Climate System



Soft upper shaft edge trim



HAIX® Vario Wide Fit System



### Upper material

Waterproof leather, hydrophobized, breathable (5.0 mg/cm<sup>2</sup>/h), 2.0 – 2.2 mm thick

### Inner Lining

GORE-TEX® Performance; 4-layer GORE-TEX® Laminate, waterproof and breathable. Abrasion-proof lining fabric with nonwoven inner layer. Optimized climate comfort for all seasons even under extreme conditions. Enhanced protection against chemicals.

### Fleece insole

Moisture-absorbent fleece insole.

### Foot bed

For extra foot comfort, impact-absorbing, moisture-wicking, antibacterial. Separate heel cup ensures optimized cushioning and foot guidance. "AIRFLOW" channels.

### Protective Throughsole

Flexible, lightweight and protective metal throughsole.

### HAIX® Protective toe cap

Anatomically formed and ultralight protective toe cap made of fiber-reinforced plastic for highest safety requirements.

### Sole

Anti-slip rubber/PU sole with road/off-road profile, abrasion-proof, for enhanced toe-to-heel support, ideal for cold weather conditions. The lightweight PU cushioning wedge provides optimum wear comfort. Excellent thermal insulation. The non-marking outer sole is resistant to heat, oil and gasoline.

### HAIX® Climate System

The HAIX® Climate system uses the pumping movement, which permits air circulation with every step – warm air is released and fresh air comes in through the vent holes at the top of the boot.

### HAIX® Vario Wide Fit System

The width of the shoe can be individually adjusted by 3 different insoles. The shoe is supplied with a red insole (medium). A yellow insole (wide) and blue insole (narrow) can be ordered separately.

### Sun Reflect

Reduces the heating effect of the upper leather by direct sunlight. Sunlight is reflected by the leather, keeping the leather and the feet cooler.

### Other features

Top-quality non-friction lacing elements, reinforced toe section.

UK	3	3½	4	4½	5	5½	6	6½	7	7½	8	8½	9	9½	10	10½	11	11½	12	12½	13	13½	14	14½	15
EU	35	36	37	37	38	39	39	40	41	41	42	43	43	44	45	45	46	47	47	48	48	49	50	50	51
US	4	4½	5	5½	6	6½	7	7½	8	8½	9	9½	10	10½	11	11½	12	12½	13	13½	14	14½	15	15½	16

### HAIX®-Schuhe, Produktions- und Vertriebs GmbH

Auhofstrasse 10, 84048 Mainburg, Germany  
T. +49(0)8751/8625-0, F. +49(0)8751/8625-25  
info@haix.de, www.haix.com